

### DETTAGLI

- Passanti cintura
- 2 tasche alla francese
- 2 taschine posteriori
- Fondo stretto

### COLORE

- 000 Nero
- 004 Blu

### TESSUTO

- 70% poliestere
- 25% viscosa
- 5% elasthan
- 200 g / m<sup>2</sup>



Le misure indicate si riferiscono alle taglie **S** per i capi femminili, **L** per i capi maschili. Per i capi a taglia unica le misure indicate sono effettive.

### COLORI DISPONIBILI

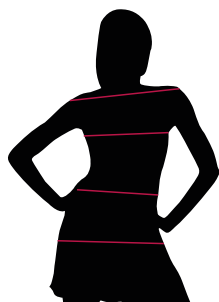


000 Nero



004 Blu

TABELLE TAGLIE  
E CORRISPONDENZE



1  
2  
3  
4

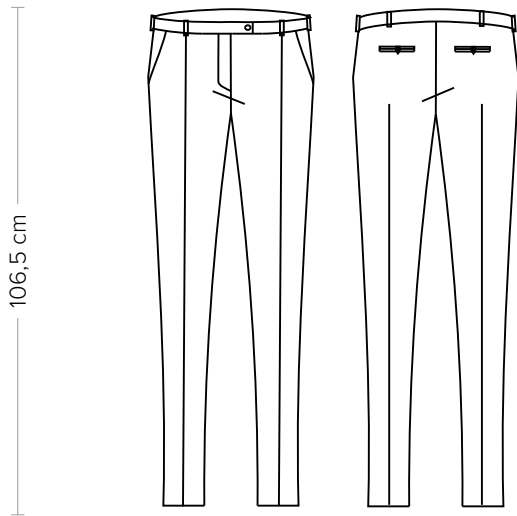
TABELLA ST-P5	SLIM FIT								
TAGLIA	XXS	XS	S	M	L	XL	XXL	3XL	4XL
1 - SPALLE									
2 - TORACE									
3 - VITA	60-63	63-67	67-71	71-77	77-83	83-91	91-99	99-107	107-115
4 - BACINO	84-88	88-92	92-96	96-102	102-108	108-116	116-124	124-132	132-140

**GUIDA ALLE TAGLIE** **1)** Prendere le misure anatomiche (corpo con abbigliamento intimo) senza stringere mantenendo ben teso il metro. **Nota:** nel caso vogliate indossare dei camici già con dell'abbigliamento sotto prendete le misure già abbigliati. **2)** Nel caso tra le misure prese vi fosse una misura a cavallo fra 2 taglie vi consigliamo di prendere quella più grande. **3)** Le misure della tabella sono espresse in centimetri.

# NOEMI

ITEM CODE  
15P01P605

**Giblor's**  
italian work/life specialist



### DETAILS

- Belt loops
- 2 side pockets
- 2 rear pockets
- Slim leg

### SIZES

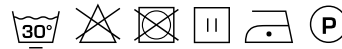
XS ÷ 3XL  
Slim Fit

### COLOURS

000 Black  
004 Blue

### FABRIC

70% polyester  
25% viscose  
5% elastane  
200 g / m<sup>2</sup>



The measures indicated refer to sizes **S** for women, **L** for men. For one-size-fits-all garments, the measurements indicated are effective.

### AVAILABLE COLOURS



000 Black



004 Blue

SIZE TABLES  
AND CORRESPONDENCES

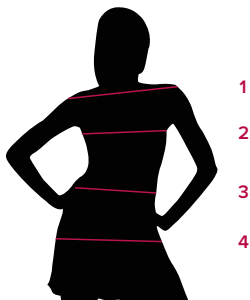


TABLE ST-P5 SLIM FIT		XXS	XS	S	M	L	XL	XXL	3XL	4XL
SIZE										
1 - SHOULDERS										
2 - CHEST										
3 - WAIST	60-63	63-67	67-71	71-77	77-83	83-91	91-99	99-107	107-115	
4 - HIPS	84-88	88-92	92-96	96-102	102-108	108-116	116-124	124-132	132-140	

**SIZE GUIDE 1)** Take the anatomical measurements (body with underwear) without tightening, keeping the measuring tape taut. Note: in case you want to wear of the gowns already with the clothing underneath take the measurements already dressed. **2)** If there is a measure between 2 sizes between the measurements taken, we advise you to take the bigger one. **3)** The measurements in the table are expressed in centimeters.

GIBLORS.COM